

Thermo Scientific TraceFinder Software



Higher productivity in trace analysis laboratories through faster method development and reporting

Due to the increasing amount of contamination being found in our food and environmental systems, today's laboratories are under constant pressure to increase productivity. The need to balance productivity with high quality analytical data generation is critical. Thermo Scientific TraceFinder software provides an integrated workflow approach to meet these challenges.

TraceFinder™ software allows the analyst to develop high throughput screening and quantitative assays quickly and accurately, using Thermo Scientific mass spectrometer (MS) systems. TraceFinder is fully integrated with Thermo Scientific Xcalibur core software, and provides a comprehensive system incorporating built-in methods for commonly found contaminants, processing methods, library searching capabilities, data review, and reporting with built-in templates. It also includes a rights-based secure user login system to protect the integrity of analytical data.



Optimized Workflow for Trace Analysis Laboratories – A secure login procedure allows identification of the operator and performance of specific tasks necessary to start building the analytical workflow.

INCREASE PRODUCTIVITY WITH FASTER METHOD DEVELOPMENT

TraceFinder Highlights

Built-in MS Methods and Compound Datasore

TraceFinder software incorporates a comprehensive list of MS methods for a diverse group of contaminants: pesticides, antibiotics, veterinary products, and industrial chemicals such as melamine. The method development section incorporates an exhaustive list of SRM transitions and their associated parameters optimized for the Thermo Scientific TSQ Series mass spectrometers. This enables users to rapidly select and develop the method of their choice.

Method Forge

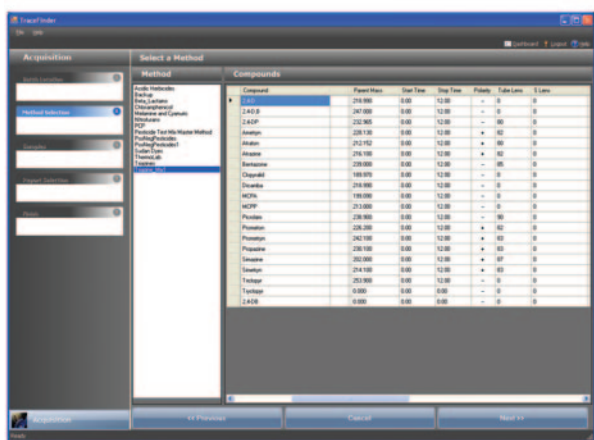
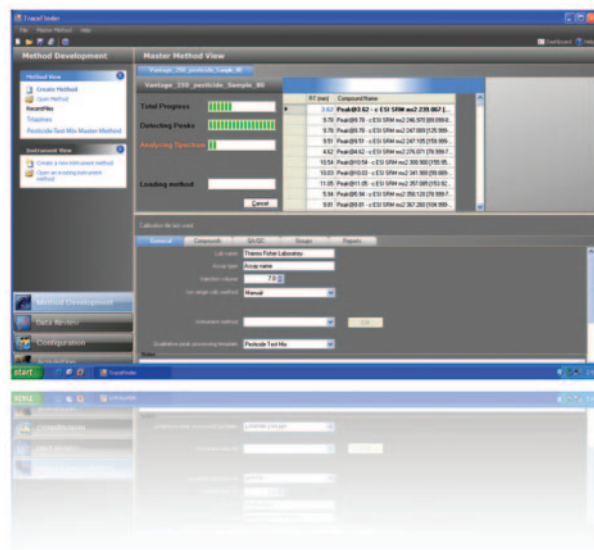
Create processing methods automatically from raw data files using Method Forge. Peaks are filtered, labeled, and identified; qualifier ions are selected; and calibration settings are generated. This significantly reduces the analyst's method development time.

Easy Method Development

Method development is simplified by using instrument-specific preconfigured MS methods. A wide range of methods are included for analysis of pesticides, antibiotics, and industrial chemicals like melamine. Newer methods are updated on the Thermo Scientific TraceFinder support Web site, and can be downloaded directly by licensed users.

Library Matching

The unique QED-MS/MS scan function of the TSQ Series allows users to trigger data-dependent full scan MS/MS spectra from SRM transitions. The MS/MS spectra generated can be automatically searched against a built-in NIST format library for confirmation of the analyte structure.



EMENT, FASTER REPORTING, AND FASTER EVERYDAY USE

Reports

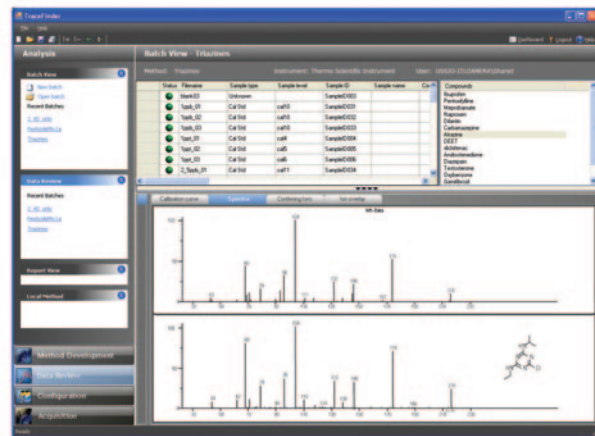
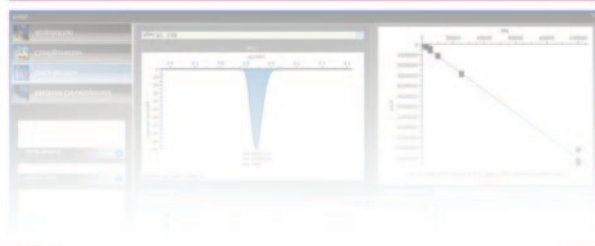
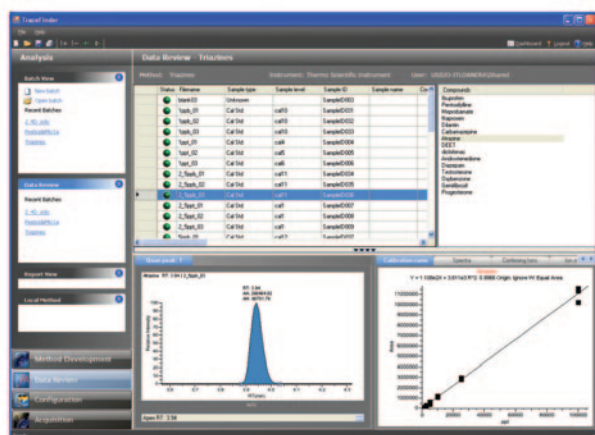
TraceFinder includes many preconfigured reporting templates in both Crystal Reports® and Microsoft® Excel® format. These incorporate requirements of environmental and food safety regulations from laboratories globally.

Rights-based user login for security

TraceFinder allows five security levels for user logins. This enables different permission levels to be assigned for different users in large regulated laboratories, thus ensuring data security.

Multiple languages

TraceFinder software is available in English. Other languages, including Chinese, will be available in the future.

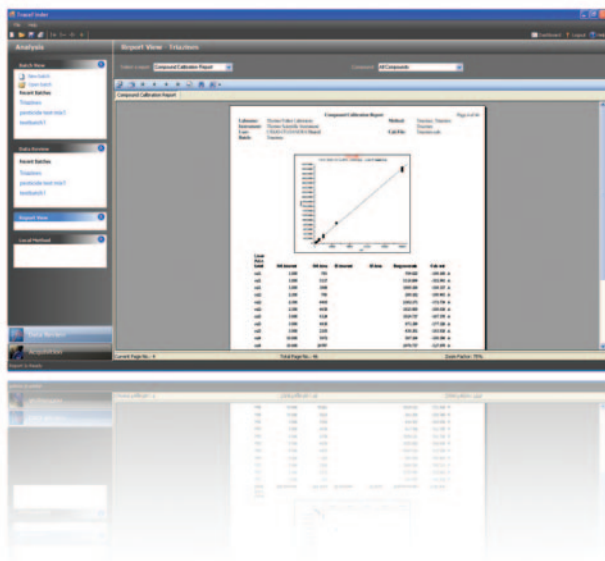


Data Processing and Review

Data review is simplified with TraceFinder, and supports the analyst's critical role in this key process. Inspect sample and reference mass spectra, evaluate peak integration, review different curve fits, and observe ion ratio values easily and fully interactively.

Library Matching

Following data acquisition and processing, mass spectra can be compared against built-in libraries. These can include NIST libraries, user-customized libraries, and instrument-specific libraries, such as the Quantitation-Enhanced Data-Dependent MS/MS library included with TSQ Series mass spectrometers.



Smart Reporting

With TraceFinder, the reporting process is an easy way to review the data. The Report View window is linked to the Data Review Page, allowing users to toggle between a specific spot in the processed data and a report. Changes made in the Data Review Page are reflected immediately in the report, without reprocessing or reanalyzing. Many predefined reporting templates – in both Crystal Reports and Excel formats – are included.



Thermo Scientific Nautilus LIMS Software for Food and Beverage Laboratories

Nautilus LIMS™ is a Laboratory Information Management System designed for the unique requirements of food and beverage labs. Leveraging the power of TraceFinder, Thermo Scientific mass spectrometers, and Xcalibur™ software, this workflow solution will increase your lab's ability to test more food samples in less time with greater accuracy. Along with the demands of increased throughput comes the growing burden of keeping track of all the samples, associated data, and raw results files. Nautilus LIMS helps laboratory managers control this ever-increasing information and data, and provides visibility into all aspects of your laboratory. Nautilus can help you oversee sample location, generate and track bar-codes, visualize sample progress through your testing regime, generate instrument run files, collect raw data, analyze results from instrumentation, render automated reports, monitor laboratory supplies, and more. For more information about Nautilus LIMS, go to www.thermo.com/nautilus.

©2009 Thermo Fisher Scientific Inc. All rights reserved. Crystal Reports is a registered trademark of Business Objects S.A., an SAP company. Microsoft and Excel are registered trademarks of Microsoft Corporation. All other trademarks are the property of Thermo Fisher Scientific Inc. and its subsidiaries. Specifications, terms and pricing are subject to change. Not all products are available in all countries. Please consult your local sales representative for details.



Thermo Fisher Scientific, San Jose, CA USA is ISO Certified.

BR63015_E 03/09S

- | | | | |
|-------------------------------------|---|--------------------------------------|-------------------------------------|
| Africa-Other +27 11 570 1840 | Denmark +45 70 23 62 60 | India +91 22 6742 9434 | South Africa +27 11 570 1840 |
| Australia +61 2 8844 9500 | Europe-Other +43 1 333 50 34 0 | Italy +39 02 950 591 | Spain +34 914 845 965 |
| Austria +43 1 333 50 34 0 | Finland/Norway/Sweden +46 8 556 468 00 | Japan +81 45 453 9100 | Switzerland +41 61 716 77 00 |
| Belgium +32 2 482 30 30 | France +33 1 60 92 48 00 | Latin America +1 608 276 5659 | UK +44 1442 233555 |
| Canada +1 800 530 8447 | Germany +49 6103 408 1014 | Middle East +43 1 333 50 34 0 | USA +1 800 532 4752 |
| China +86 10 8419 3588 | | Netherlands +31 76 579 55 55 | www.thermo.com |

